



WILLIAM BUCHAN HOMES

2630 116th Avenue NE
Suite 100
Bellevue, WA 98004

www.buchanhomes.com



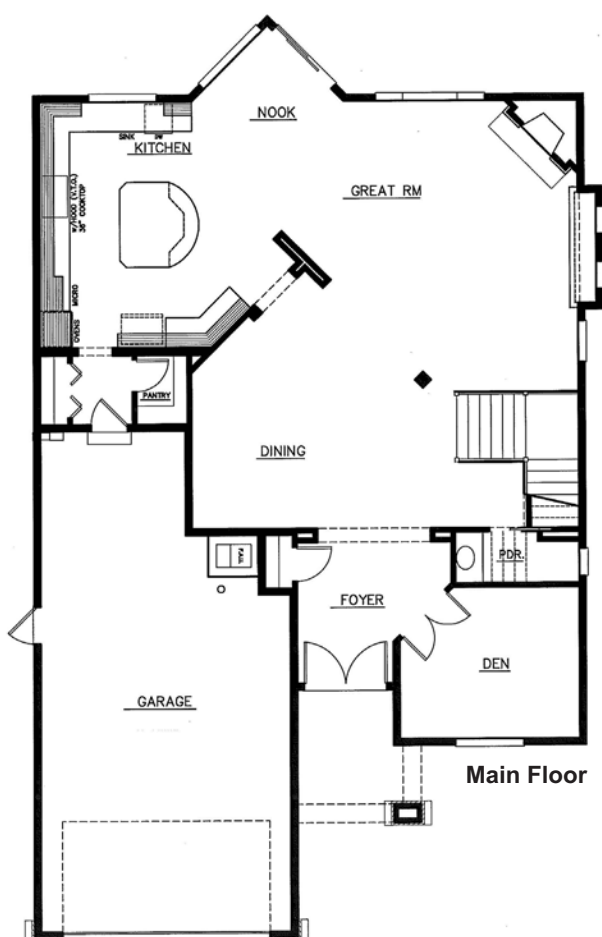
lot 14 : **Fulton II**

price: **\$729,000**
square feet: **3,430**
lot size: **7,290**
bedrooms: **4**

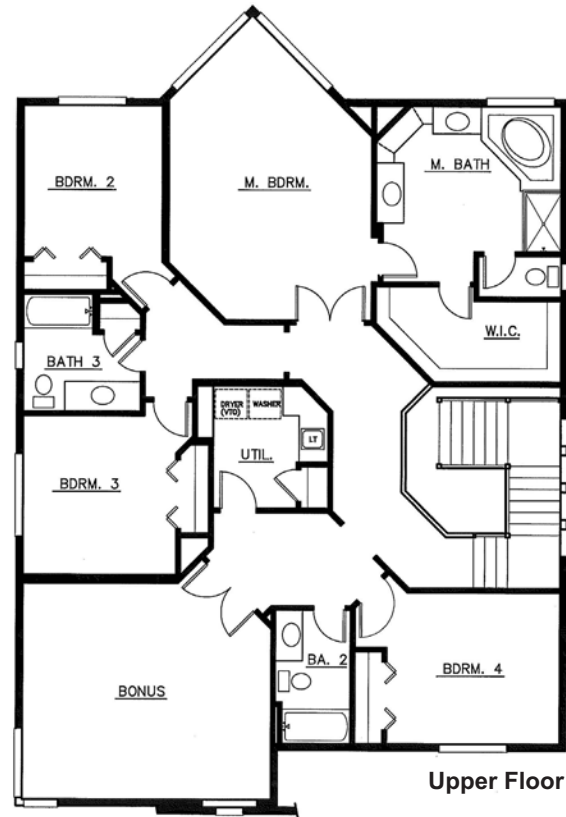
bathrooms: **3.5**
garage: **Tandem 3rd Bay**
other: **Den & Bonus**
completion: **September**



Front Elevation



Main Floor



Upper Floor

NOTHING CONTAINED HEREIN SHALL BE DEEMED TO BE A WARRANTY OF THE ACCURACY OF THE INFORMATION SET FORTH, AND SUCH INFORMATION IS SUBJECT TO CHANGE WITHOUT NOTICE.
©2010 WILLIAM BUCHAN HOMES, INC.

for more information contact **Scott Estes (206) 953-3726**



WILLIAM BUCHAN HOMES
2630 116th Avenue NE
Suite 100
Bellevue, WA 98004

www.buchanhomes.com

HOME FEATURES...

EXTERIOR FEATURES...

- Homes are carefully positioned to best utilize the property and create an attractive neighborhood.
- Custom designed elevations with cultured stone details, per plan.
- Hardiplank siding with 5" reveal for a pleasing appearance including decorative architectural trim details.
- Custom designed millwork around the exterior of the entry door and T & G cedar lined Entry soffits.
- Exterior paint color patterns which compliment surrounding homes.
- Exposed aggregate front walk and driveway.
- Exposed aggregate rear patio.
- Professionally landscaped front and rear yards with automatic irrigation.
- Side and rear yard fencing with 2 gates.
- Steel raised panel roll-up garage doors with decorative window lites, per plan.
- Electric garage door opener with 2 remotes.

AS YOU ENTER...

- Oil rubbed bronze thumb latch door hardware.
- Raised panel entry door with oil rubbed bronze kick plate.
- Custom millwork includes painted wainscoting, crown molding, 5 ¼" baseboard and stained base shoe.
- Decorator chandelier.
- Birch 5" hardwood floors.
- Hand-crafted staircase with wrought iron balusters and custom newel posts.

IN THE DINING ROOM...

- Painted millwork includes wainscoting, crown molding, 5 ¼" baseboard and custom window trim detail.
- Coffered ceiling with additional painted crown molding.
- Birch 5" hardwood floors.

- Decorative dining room chandelier.

IN THE DEN...

- Dual raised panel entry doors.
- Painted millwork includes chair rail, crown molding, 5 ¼" baseboard and custom window trim detail.

IN THE POWDER ROOM...

- Custom cabinetry with tile countertop.
- Decorator White China Shell sink with Kohler Kelston style Oil-Rubbed Bronze faucet.
- Painted millwork includes crown molding, backsplash chair rail detail and 5 ¼" baseboard with stained base shoe.
- Birch 5" hardwood floors.

IN THE KITCHEN...

- Custom Frameless cabinetry with nutmeg tone stain, hidden hinges & oil rubbed bronze pulls and crown-shelf moulding,
- Slab granite countertops include beveled self edge and custom decorator tile backsplash.
- Birch 5" hardwood floors.
- Custom designed islands with breakfast bar seating and slab granite countertops.
- Blanco, double compartment stainless steel kitchen sink.
- Elkay Arezzo series single handle chrome faucet.
- G.E. Profile 5-burner stainless steel cook top.
- G.E. Profile 30" stainless steel double oven with convection.
- G.E. Profile stainless steel built-in microwave with trim kit.
- G.E. Profile stainless steel dishwasher (Energy Star).
- Painted crown molding, window casings and 5 ¼" baseboards.
- Pendant lighting over Kitchen Island.
- Walk-in pantries, per plan.

NOTHING CONTAINED HEREIN SHALL BE DEEMED TO BE A WARRANTY OF THE ACCURACY OF THE INFORMATION SET FORTH, AND SUCH INFORMATION IS SUBJECT TO CHANGE WITHOUT NOTICE.
©2010 WILLIAM BUCHAN HOMES, INC.

for more information contact **Scott Estes (206) 953-3726**



WILLIAM BUCHAN HOMES
2630 116th Avenue NE
Suite 100
Bellevue, WA 98004

www.buchanhomes.com

HOME FEATURES...

IN THE GREAT ROOM...

- Gas fireplace with raised cultured stone hearth and wood mantle.
- Custom built-in bookcase/media center.
- Painted millwork package includes crown molding, window casings and 5 1/4" baseboards.

IN THE LAUNDRY ROOM...

- Custom lower Frameless cabinet with laundry sinks.
- Proflo chrome pull out sprayer faucet.
- Recessed hookup for dryer vent and washing machine drain.
- Durable vinyl flooring.

IN THE 2ND AND/OR 3RD BATHROOM...

- Custom Frameless cabinetry with dual sinks, per plan.
- Ceramic tile countertop with tile self edge and custom decorator tile back splash.
- Grohe plumbing fixtures.
- Durable vinyl flooring.

IN THE MASTER BEDROOM SUITE...

- Raised or coffered ceiling with crown molding, per plan.
- Painted millwork includes crown molding, 5 1/4" baseboard and custom window trim.
- Private bath/dressing area with double vanities and custom Frameless cabinetry.
- Kohler Kelson style brushed nickel faucets and towel bar.
- Plate glass mirror with custom millwork surround and twin light fixtures installed.
- Ceramic tile countertops with tile self edge and chair rail backsplash detail.
- Luxurious soaking tub with ceramic tile platform and backsplash.
- Ceramic tile floors with decorator tile accents.

- Separate shower stall with custom glass door and ceramic tile walls.
- Separate toilet room with ceramic tile floor.
- Walk-in closet with vinyl coated shelving and organizers.

CONSTRUCTION FEATURES...

- 2x6 exterior double wall construction with R-21 insulation and R-38 attic insulation.
- Plywood subfloors with silent floor system on second floor with 14" TJI's on 16" centers.
- Main level floor framing has 2x8's on 16" centers.
- Smooth-wall interior finish drywall.
- Laminated Shingle roof 30 year roofing.
- Rinnai Tankless/on demand water heater for energy efficiency.
- Energy Star package York natural gas forced air furnace with a 95% AFUE rating.
- Energy efficient Low E vinyl Weathervane windows with window screens.
- Security system with monitoring available.
- Structured wiring interface for local area network, telephone and cable TV with Quad Shielded RG6 Cable and CAT-6 Data lines.
- Garage has compacted sub grade, drilled stub steel into foundation walls. Rebar is used throughout the garage slab.
- Rehau Plumbing System with solid brass fittings including copper manifolds at plumbing connections inside walls and behind cabinets.
- Copper is used for hot water relief lines.
- Home framing is dried to a maximum of 12% relative humidity prior to sheetrock stage.
- Return air supplies for the furnace are fully ducted and sealed with mastic.